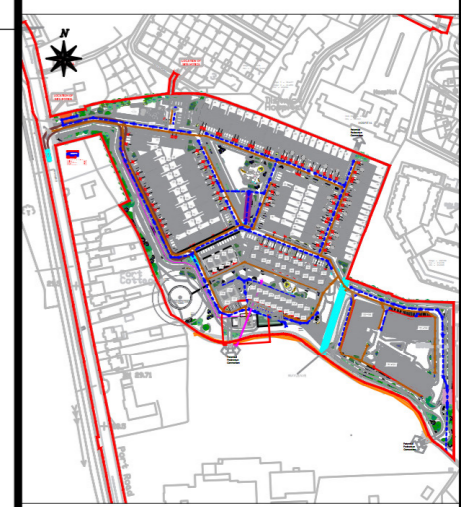


**NOTES:**  
All dimensions in metres.  
Do not scale from drawing.  
For any discrepancies found please consult with design office.  
This drawing is for PLANNING purposes only.  
Not for Construction.

**Legend:**  
Note: Drawing To Be Read in Conjunction With Irish Water: Water Infrastructure Standard Details Document Number: IW-CDS-5030-01 & Irish Water Code of Practice for Wastewater Infrastructure: IW-CDS-5030-03

Standard separation distances refer to STD-WW-05 & STD-WW-06  
All gravity foul sewers to be uPVC.  
All rising mains to be Polyethylene (P.E)



| Rev By | Date | Description |
|--------|------|-------------|
|        |      |             |

**G DM 04/24 IW Revision**

**Drawing Status:** PLANNING

**Project Title:**  
Residential Development at Inch / Coollegreen, Port Road, Killarney

**Drawing Title:**  
Proposed Wastewater Lines Longsections Sheet 8

**Client:**  
Portal Asset Holdings Ltd.

**M.H.L & Associates Ltd.**  
Consulting Engineers

Unit 1b,  
The Atrium,  
Blackpool,  
Cork

Tel: 021-4840214  
Fax: 021-4840215  
E-Mail: info@mhl.ie

|                     |                  |                    |
|---------------------|------------------|--------------------|
| <b>Designed:</b> DM | <b>Drawn:</b> DM | <b>Checked:</b> BM |
|---------------------|------------------|--------------------|

**Scale:** 1:500 @A1  
1:1000 @A3 **Date:** APRIL 2024

|                        |                                  |                     |
|------------------------|----------------------------------|---------------------|
| <b>Job No:</b> 18137HD | <b>Drawing No:</b> PR-MHL-PS-P08 | <b>Revision:</b> _G |
|------------------------|----------------------------------|---------------------|